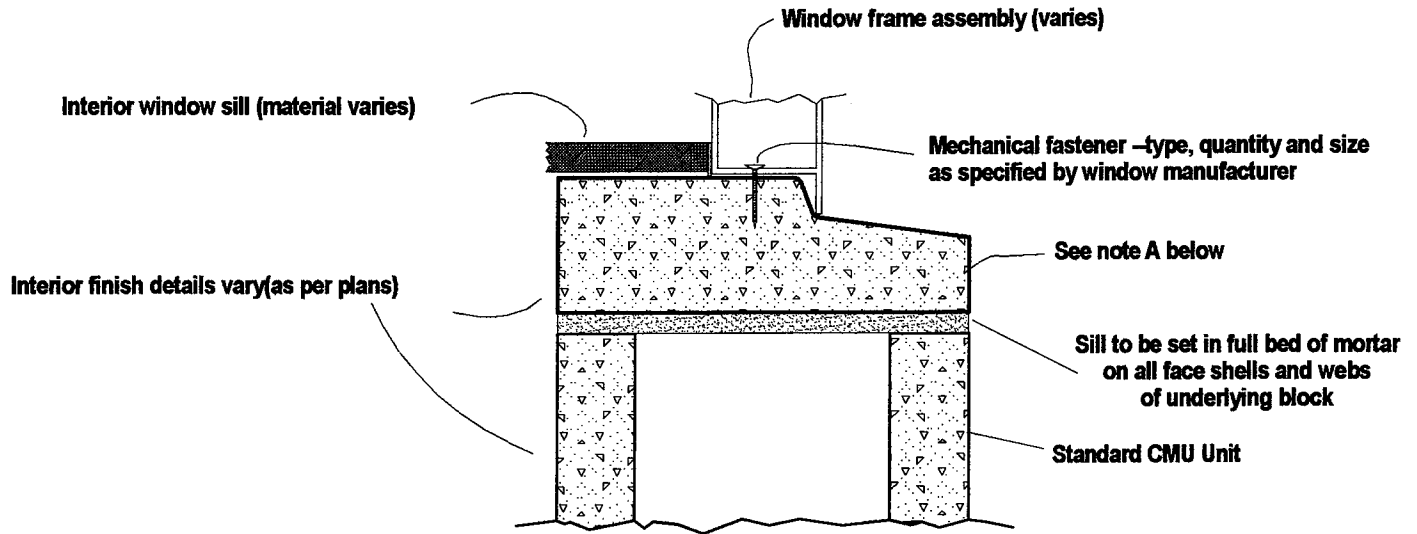
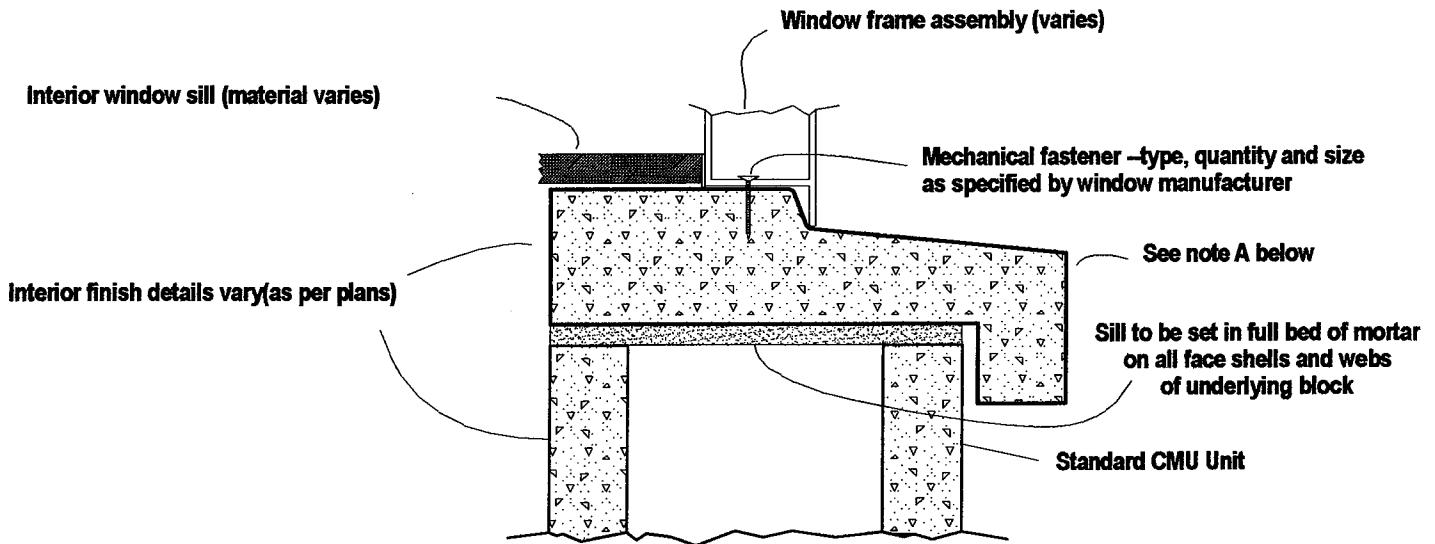


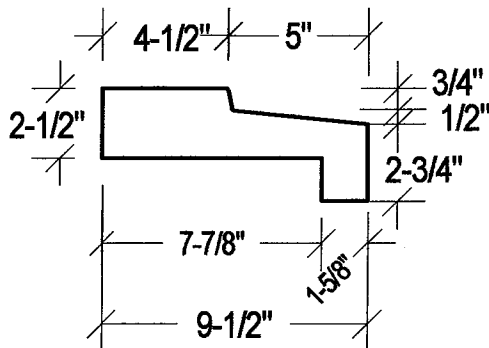
# TYPICAL INSTALLATION FOR HURRICANE WINDOW SILLS



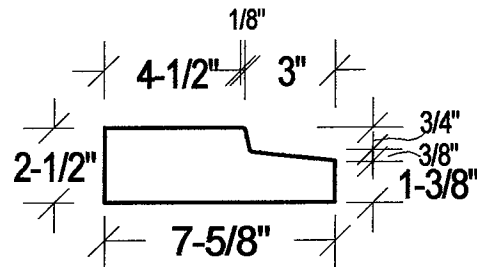
## HURRICANE RESISTANT STUCCO SILL



## HURRICANE RESISTANT SILL



**HURRICANE RESISTANT SILL**



**HURRICANE RESISTANT STUCCO SILL**

**Note:**  
**A)** The above sills are manufactured of similar materials as the concrete masonry units (CMU). The sill therefore shall be treated, with regards to preventing water infiltration, the same as the concrete masonry units. The sills are not intended nor designed to provide a waterproof barrier between exterior and interior spaces. Responsibility of sealing against treatment for water infiltration is that of the installer or others.